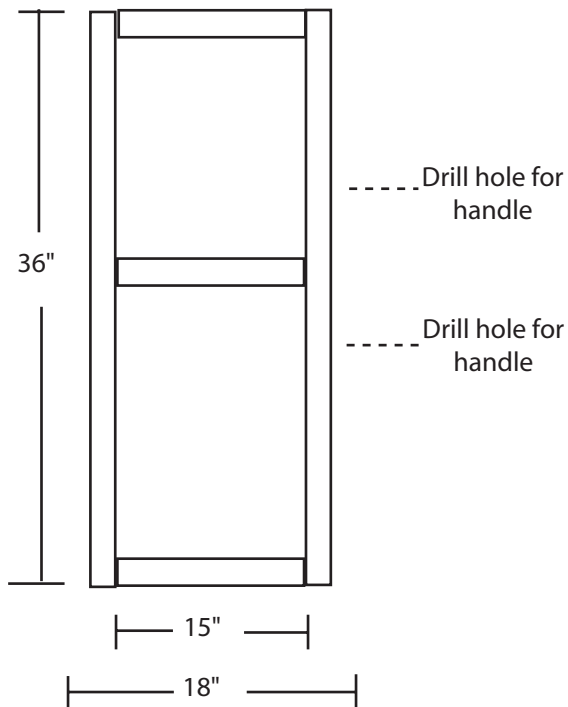
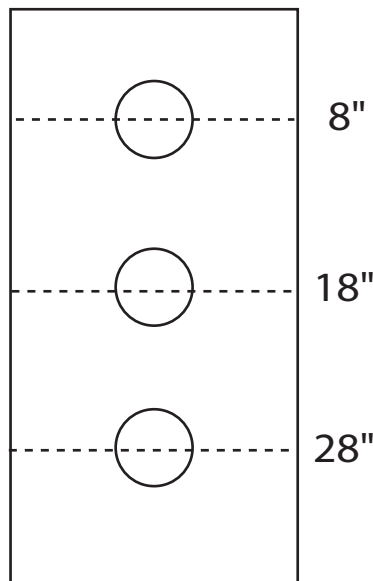


Hillbilly Horseshoes

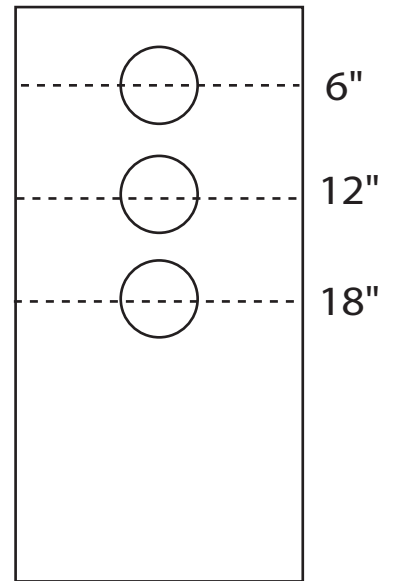
Frame
Top View



Surface
Layout v1



Surface
Layout v2



Materials:
 (2) 2x4 x 10'
 (1) 4x8 5/8" plywood
 14' of rope
 (6) Galvanized steel washers - 2.5" in diameter with a 1" center hole
 Polyurethane sealer - select one for outdoor use...
 1 1/2" decking screws

Instructions

1. Measure & cut the following: (4) 3 foot boards, (6) 15 inch boards, (2) 3 foot x 18 inch plywood sheets, (2) 1/2" eye hooks
2. Create a frame by screwing two 3-foot and three 15-inch boards together. The shorter boards are on the inside of the longer boards. Repeat for other frame.
3. Drill (2) 1/2" holes for the rope handle approximately 8 inches apart on one long side of each frame.
4. Cut (2) 1-foot sections for rope handles. Insert rope end through each hole, and tie knot on inside of frame to create handle. Repeat for other frame.
5. Use a framing square, and draw a line across the plywood at 8", 18", and 28". Then mark the middle of each of these lines (at 9" mark). Draw a 3" circle at each location, and cut with a jig saw, or a 3" hole cutter drill bit if you are so fortunate...
6. Attach the plywood tops to the frames using deck screws.
7. Seal with 2-3 coats of polyurethane.
8. Screw one eye hook into top end of each frame. Attach end of rope to each eye hook - this ensures exact spacing every time!
9. Enjoy!!!